

Task Luminaire



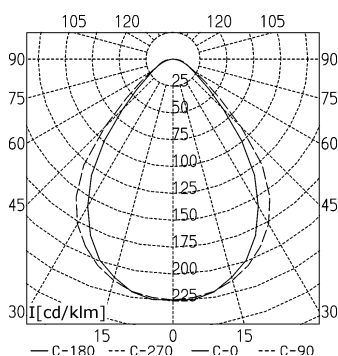
MAIA - DTE 111 F

connected load
 fitted with
 work equipment
 mains lead
 luminaire body
 material
 tubular sections
 material
 surface
 weight (net)
 fastening
 power consumption
 technology
 usage
 glare-free
 balance of articulation joints
 class of protection
 colour luminaire body
 colour of tubular sections
 article no.

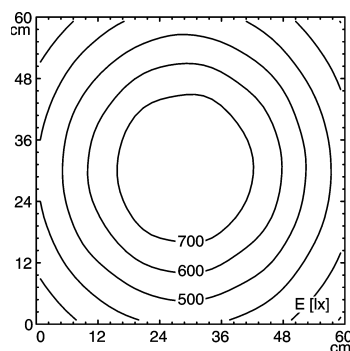
230-240 V; 50-60 Hz
 1 x compact fluorescent lamp TC-SEL 11 W
 electronic ballast in housing
 approx. 3.4 m; Euro plug

 plastic

 tubular aluminium section
 anodized
 approx. 1,0 kg
 table base (accessory)~table clamp
 approx. 12 W
 switchable
 rocker switch
 structured screen
 gas pressure spring
 II
 aluminium coloured anodised
 aluminium coloured anodised
 112293000



E_{min}: 239 lx
 E_m: 529 lx
 E_{max}: 810 lx



measuring conditions: d=50cm

